

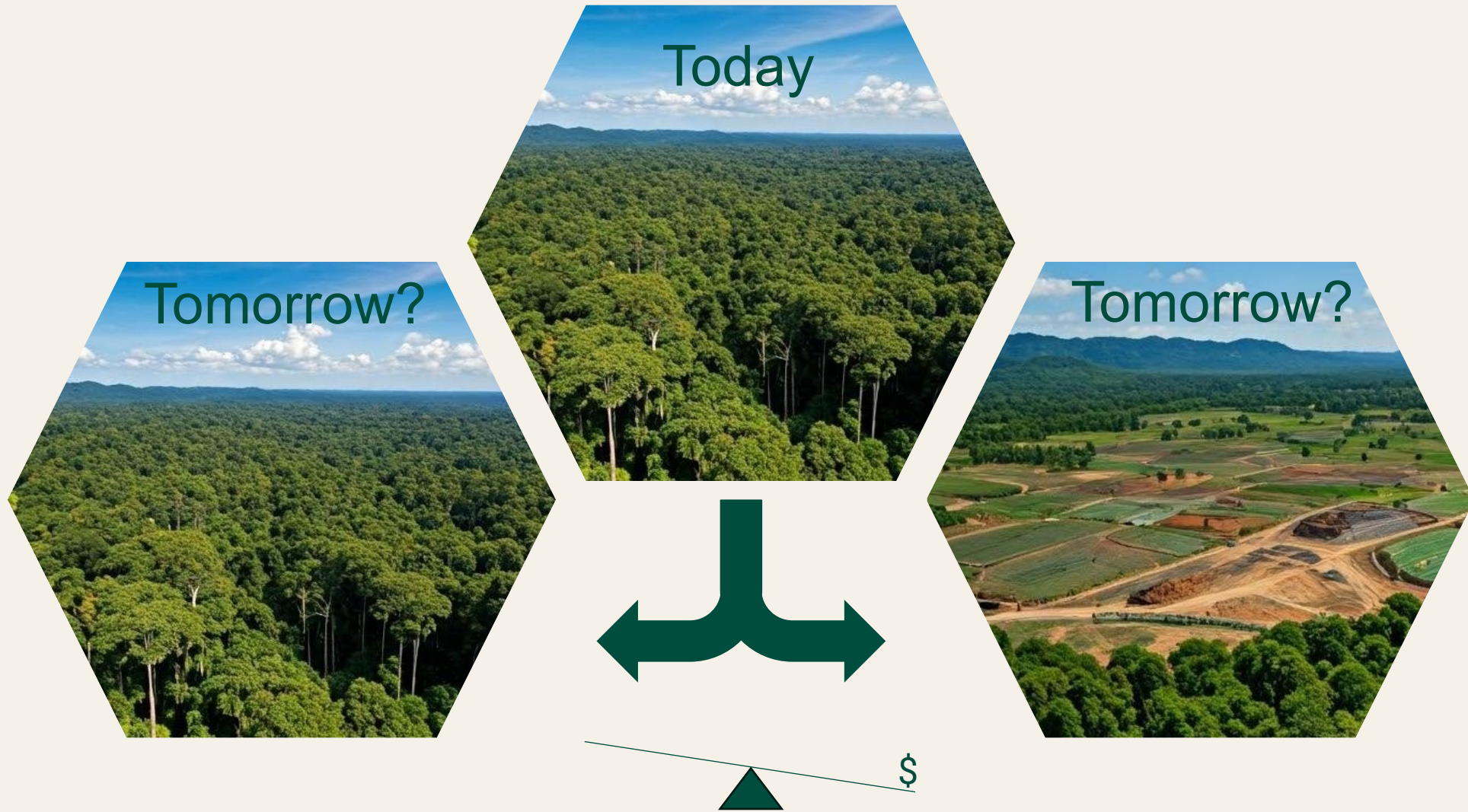
THE
LANDBANKING
GROUP



▶▶ Fast-forward private sector **investment**
into conservation through
outcome-based finance

Benjamin Leutner, Maryn van der Laarse, Sonja Stuchtey

Management & Opportunity Costs



Our Ambition



Incentivize **nature as a viable and competitive form of land-use**. Mobilize private-sector investment and realize 30x30.



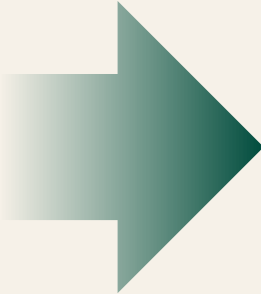
Establish a **practical currency for nature**, outcomes-based, verifiable, universally applicable. Align with emerging standards and accounting frameworks



Leverage technology to ensure reliability, transparency and accessibility, enabling fiduciary-grade claims.



Facilitate pay-for-performance transactions at scale and generate income for different entities delivering nature incl. local communities.

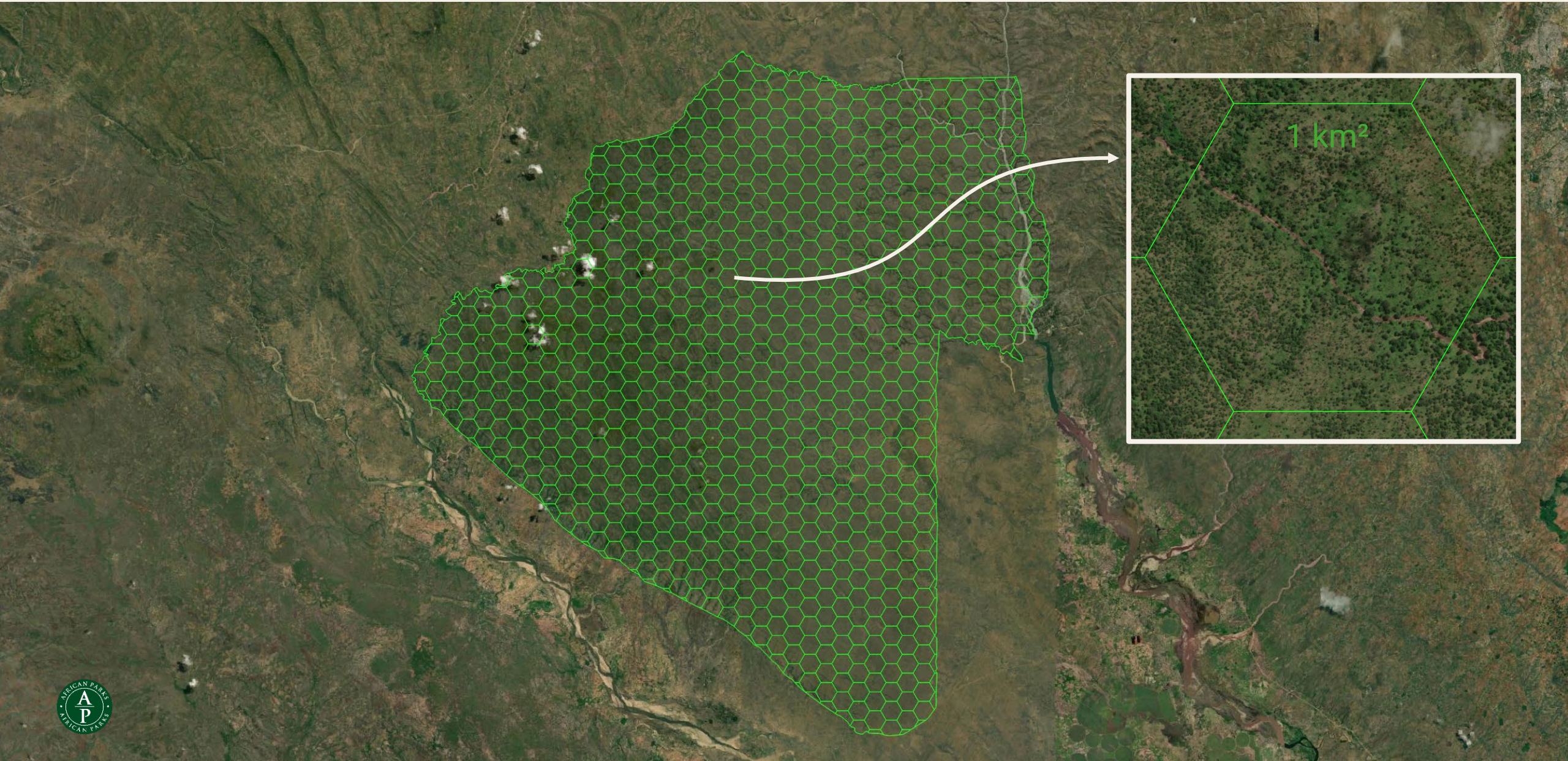


Our Approach

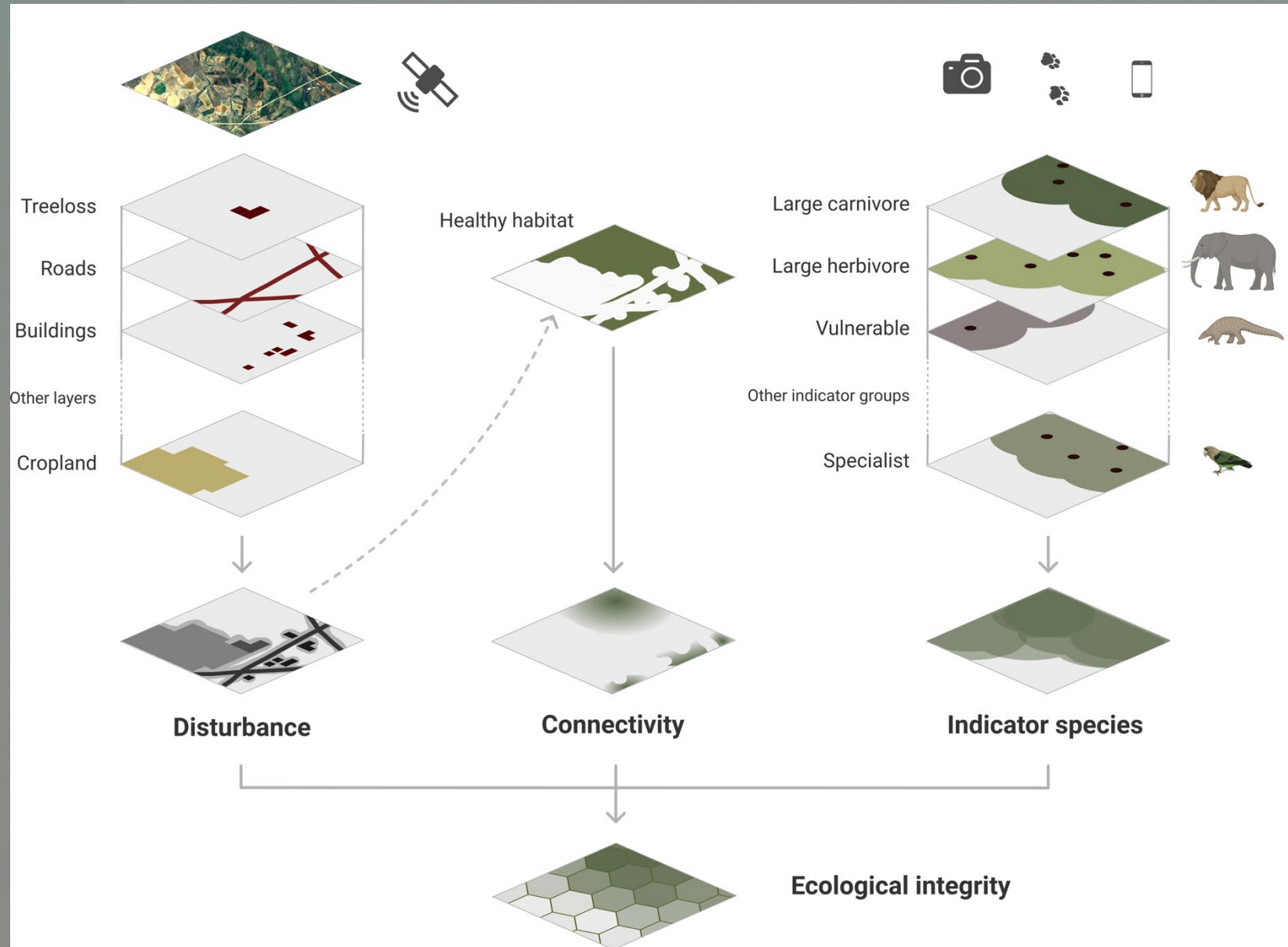
The Verifiable Nature Unit (VNU)

1 km² of nature that is transitioned in its current state or in an improved state, from one year to the next, as verified by key measurements.

1 Verifiable Nature Unit = 1km² of Intact Nature



VNUs are based on a measure of **ecological integrity**



Indicator Species



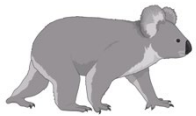
1. Large carnivore 🐆

Large predator or scavenger heavier than 15 kg that primarily feeds on other animals or an apex predator at the top trophic level.



3. Vulnerable 🐾

A species that's on the IUCN's red list (near threatened or higher class) or CITES Appendix I, II or III. Species that are otherwise sensitive or sentinel are also included.



5. Specialist 🦄

Endemic species are unique to a specific location.
Dependent species are highly reliant on the unique conditions provided by a specific healthy ecosystem.
Specialists are strongly associated with specific habitat features.



7. Engineer or keystone 🛠️

Ecosystem engineers significantly modify, create, or maintain habitats, affecting the availability of resources to other species.
Keystone species have proportionally large effects on community structure and their removal causes massive changes in species composition and other ecosystem attributes.



9. Medium herbivore or seed disperser 🍎

Herbivores weighing between 15 and 100 kg or important seed dispersers or seed predators.

2. Large herbivore 🐘

Large organism heavier than 100 kg that primarily feeds on plants.



4. Old-growth 🌳

Large, old or dependent vegetation or structures that are indicative of an old-growth ecosystem.



6. Dependent migrant 🦅

Species that move from one area to another to feed, breed or avoid harsh weather conditions while heavily relying on quality habitat.



8. Medium carnivore 🐍

Small predator or scavenger weighing between 2 and 15 kg that primarily feeds on other animals.

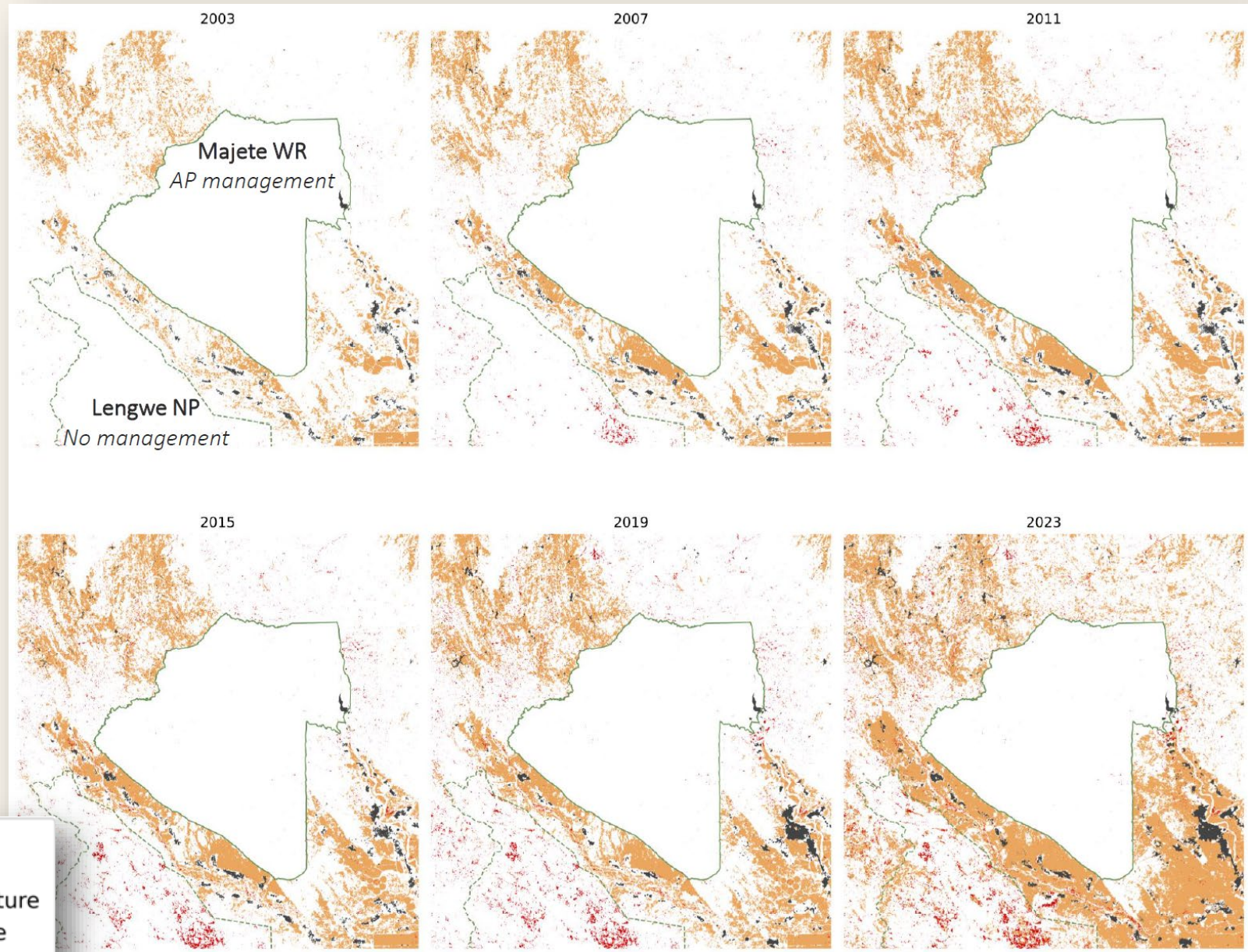






10. Freshwater 💧

Indicators of freshwater health such as reophilic, benthic, migratory or large species.

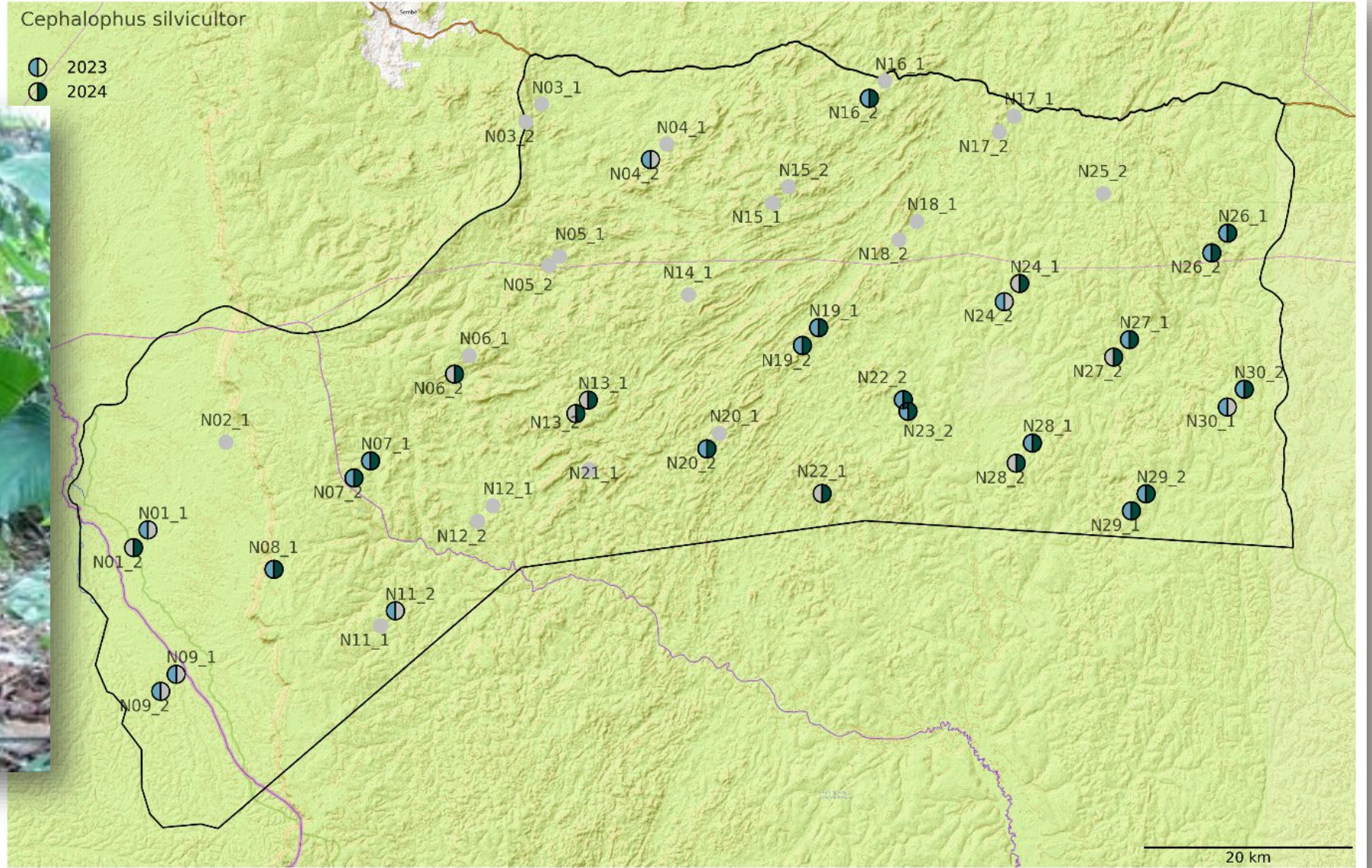


Habitat Integrity



-  Agriculture
-  Tree loss
-  Built up and Infrastructure
-  Majete Wildlife Reserve
-  Lengwe National Park

Indicator Species








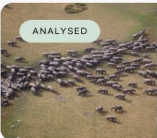
Investment Platform: Landler.io

Landler Projects Investments Portfolio MB

Projects Create new project



3 PROJECTS Create new project

ANALYSED	PROJECT NAME	MANAGEMENT	AREA	LOCATION	See details
	Majete Wildlife Reserve	African Parks	711 km2	Malawi	See details
	Parc National Odzala Kokoua	African Parks	13 867 km2	Republic of Congo	See details
	Zakouma National Park	African Parks	3 054 km2	Chad	See details

Landler Projects Portfolio MB

← Majete Wildlife Reserve Analyse project ⋮


PROJECT NAME
Majete Wildlife Reserve

MANAGEMENT **African Parks** PROJECT SIZE **710,99 ha**

LOCATION **Malawi** NUMBERS OF PLOT **711**

ECOREGION
Zambezian-Limpopo mixed woodlands and Dry miombo woodlands


BIOMES
Savannah



LAND MONITORING Interactive map view

Nature unit value

OPTIMAL

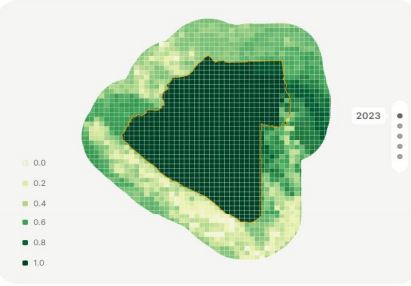


NATURE UNIT VALUE AVG
0.992

HABITAT INTACTNESS AVG **0.988** INDICATOR SPECIES SCORE AVG **0.997**

[See more details >](#)

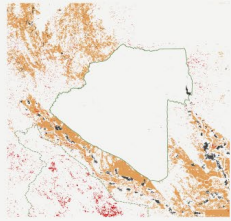
More data is available at project and plot level



Habitat integrity

2003-2023

- Agriculture
- Tree loss
- Built up and infrastructure
- Majete Wildlife Reserve
- Lanwe National park




HABITAT INTEGRITY AVG
0.988

[See more details >](#)

More data is available at project and plot level

Indicator species score



INDICATOR SPECIES SCORE AVG
0.997

[See more details >](#)

More data is available at project and plot level

Issued Units & Pricing

Nature claim

=

711km² of nature
maintained &
restored in 2022

=

711 VNUs issued
for 2022
@ 2,774 USD / km²



EXTERNAL VERIFICATION BY:
"PREFERRED BY NATURE"

AREA

711 km²

CHANGE IN HABITAT INTACTNESS SCORE OVER PRIOR
YEAR

0.997

+ 0% 2021

CHANGE IN INDICATOR SPECIES ABUNDANCES
SCORES OVER PRIOR YEAR

1.051

+ 5.1% 2021

AUDITED ANNUAL MANAGEMENT COST

\$1,970,000

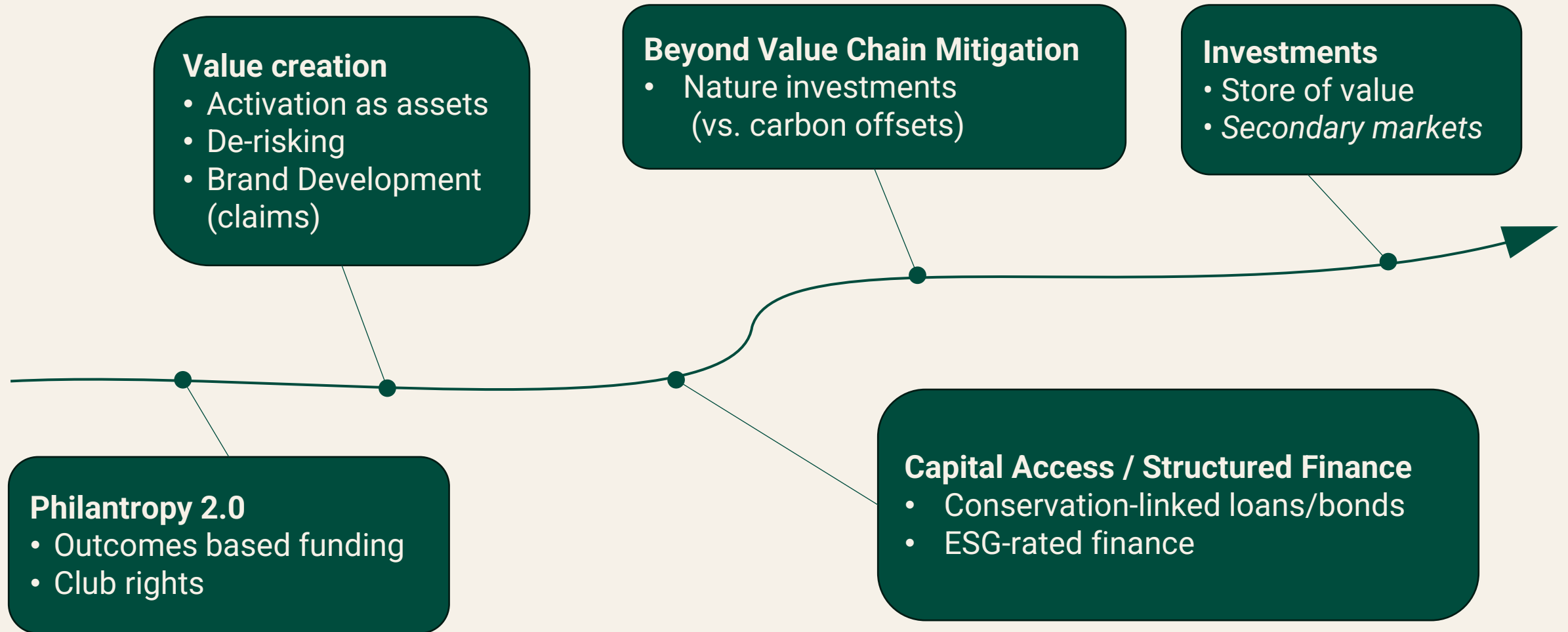
EXTERNAL VERIFICATION BY:
"PREFERRED BY NATURE"

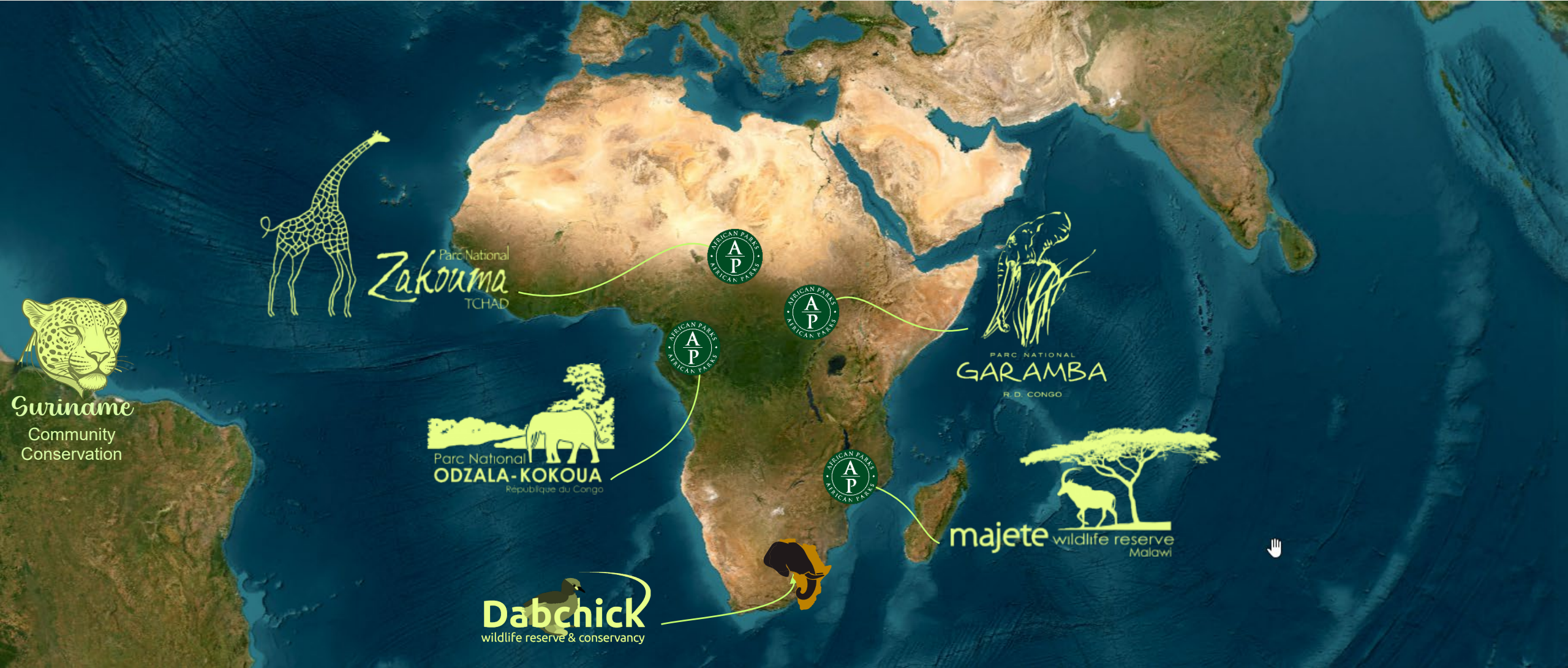
27

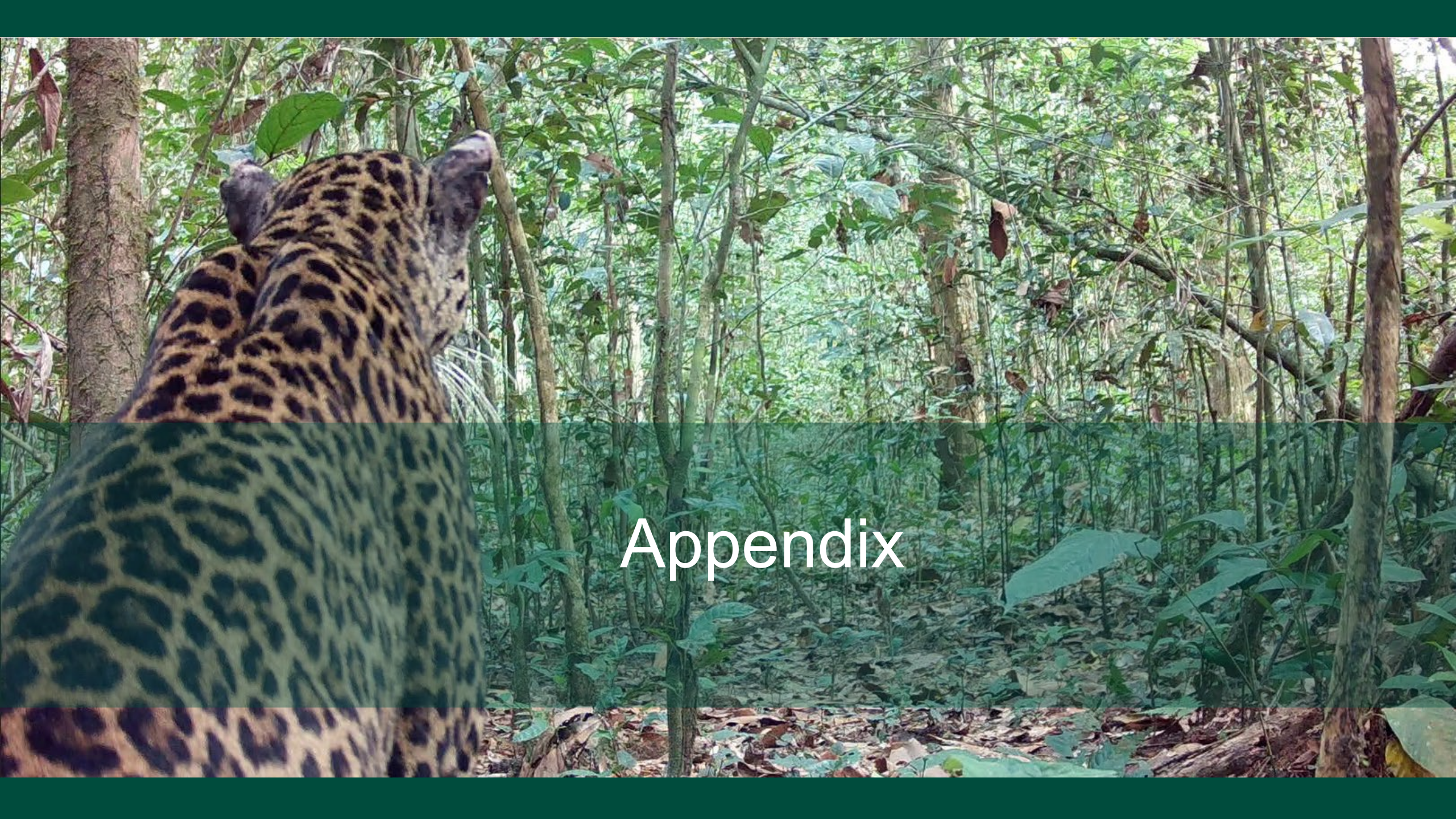
EXTERNAL VERIFICATION BY:
"PREFERRED BY NATURE"

31

Business Case for Buyers







Appendix

Indicator Species

Engineer or keystone	<ul style="list-style-type: none"> • Aardvark • Red River Hog • Brown-eared Woodpecker • Elliot's Woodpecker • Gabon Woodpecker • Giant Ground Pangolin
Medium carnivore	<ul style="list-style-type: none"> • African Golden Cat • African Woolly-necked Stork • Openbill Stork • Serval • Marsh mongoose • African Civet
Medium herbivore or seed disperser	<ul style="list-style-type: none"> • Yellow-backed Duiker • Situtunga • African Palm-Civet • Northern bushbuck • White-thighed Hornbill • Congo Pied Hornbill • Great Blue Turaco • Black-fronted duiker

Large carnivore	<ul style="list-style-type: none"> • Leopard • Spotted Hyena • Crowned Eagle • African Rock Python • West African Crocodile • Congo Clawless Otter
Large herbivore	<ul style="list-style-type: none"> • Forest Elephant • African Buffalo • Bongo • Western Gorilla • Giant Forest Hog • Common Hippopotamus
Vulnerable	<ul style="list-style-type: none"> • Chimpanzee • White-bellied Pangolin • Black Colobus • African Grey Parrot • Grey-cheeked Mangabey
Specialist	<ul style="list-style-type: none"> • Black Guinea fowl • Bare-cheeked Trogon • Plumed Guinea fowl • Nkulengu Rail • Mandrill • Moustached Monkey